

# STONE CURTAIN WALL SYSTEM

# 03

inspection report



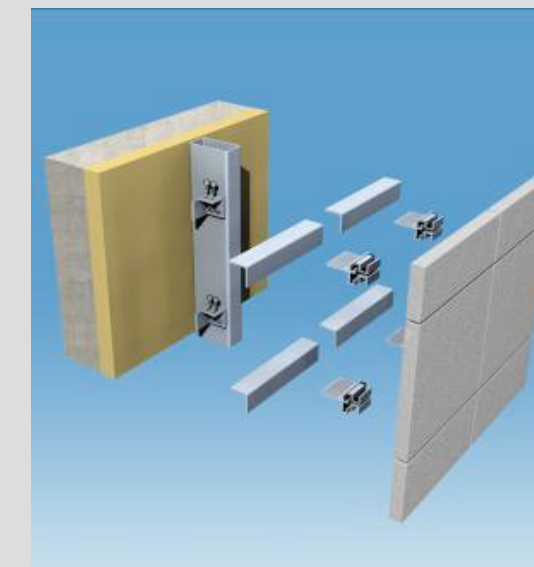
## Granite stone curtain wal



Granite is an igneous rock, mainly composed of quartz, feldspar and mica, with stable and excellent performance.

Density	2.6-2.75g/cm <sup>3</sup>
Compressive strength	120-300MPa
Bending strength	≥8.0MPa (curtain wall standard)
Water absorption rate	≤0.5% (Low water absorption rate, anti-freezing and anti-fouling)
Mohs hardness	6 to 7 (high wear resistance)
Weather resistance	Class A non-combustible, resistant to acids and alkalis, freeze-thaw cycles, and salts pray, with a service life of over 50 years.
Radioactivity	Class A standard (internal irradiation ≤1.0, external irradiation ≤1.3) applicable both indoors and outdoors.

## Product Advantages



### Safe and reliable (dry-hanging system)

1. Adopt back bolt type/short slot type/steel pin type dry hanging, separate from wet pasting, anti-bulging and anti-falling.
2. It has strong seismic resistance, wind pressure resistance and in-plane deformation and is suitable for super high-rise buildings.
3. Each piece can be independently disassembled and assembled, making maintenance convenient and the cost low.

## Product Advantages



### Natural texture, high-end

The texture is natural and the color is rich (gray/white/yellow/red/black, with a gloss of up to 90+). It is solemn and elegant with high recognition.



### Ultimate durability

Resistant to wind, rain, ultraviolet rays, temperature differences and corrosion, it will not fade, weather or crack for decades.



### Environmental protection and energy conservation

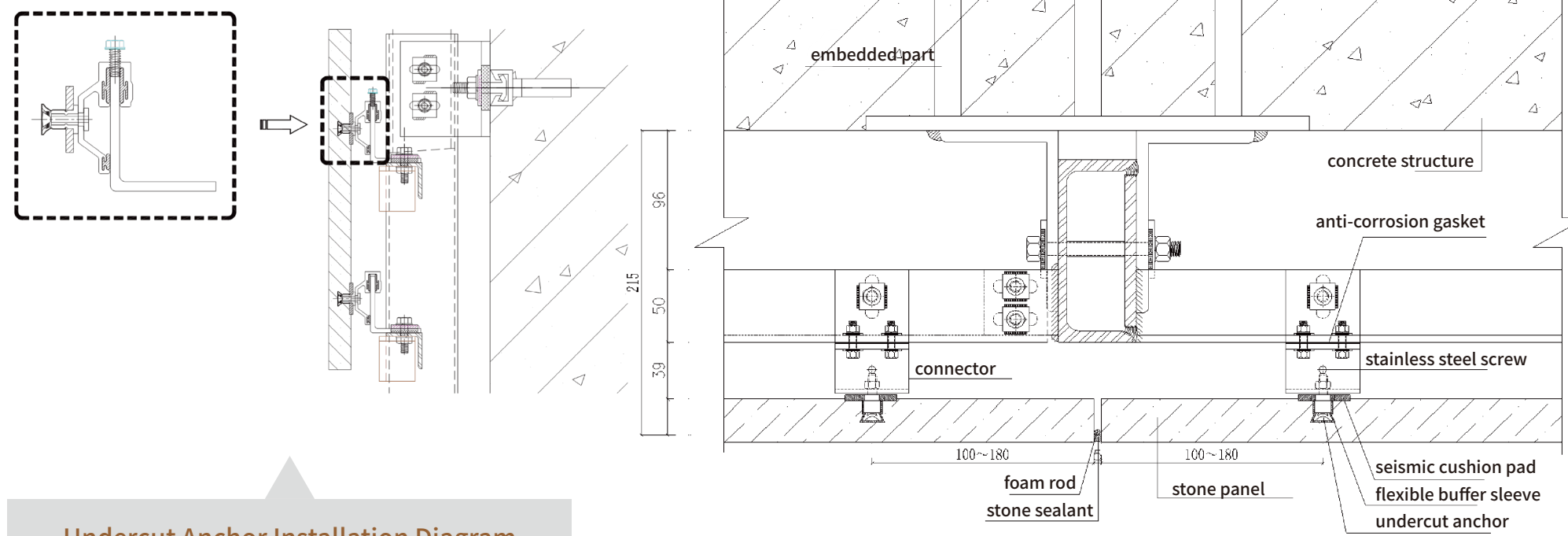
Natural inorganic materials, free of VOC and radiation pollution; it has excellent heat insulation and heat storage, reducing building energy consumption.



### Strong adaptability

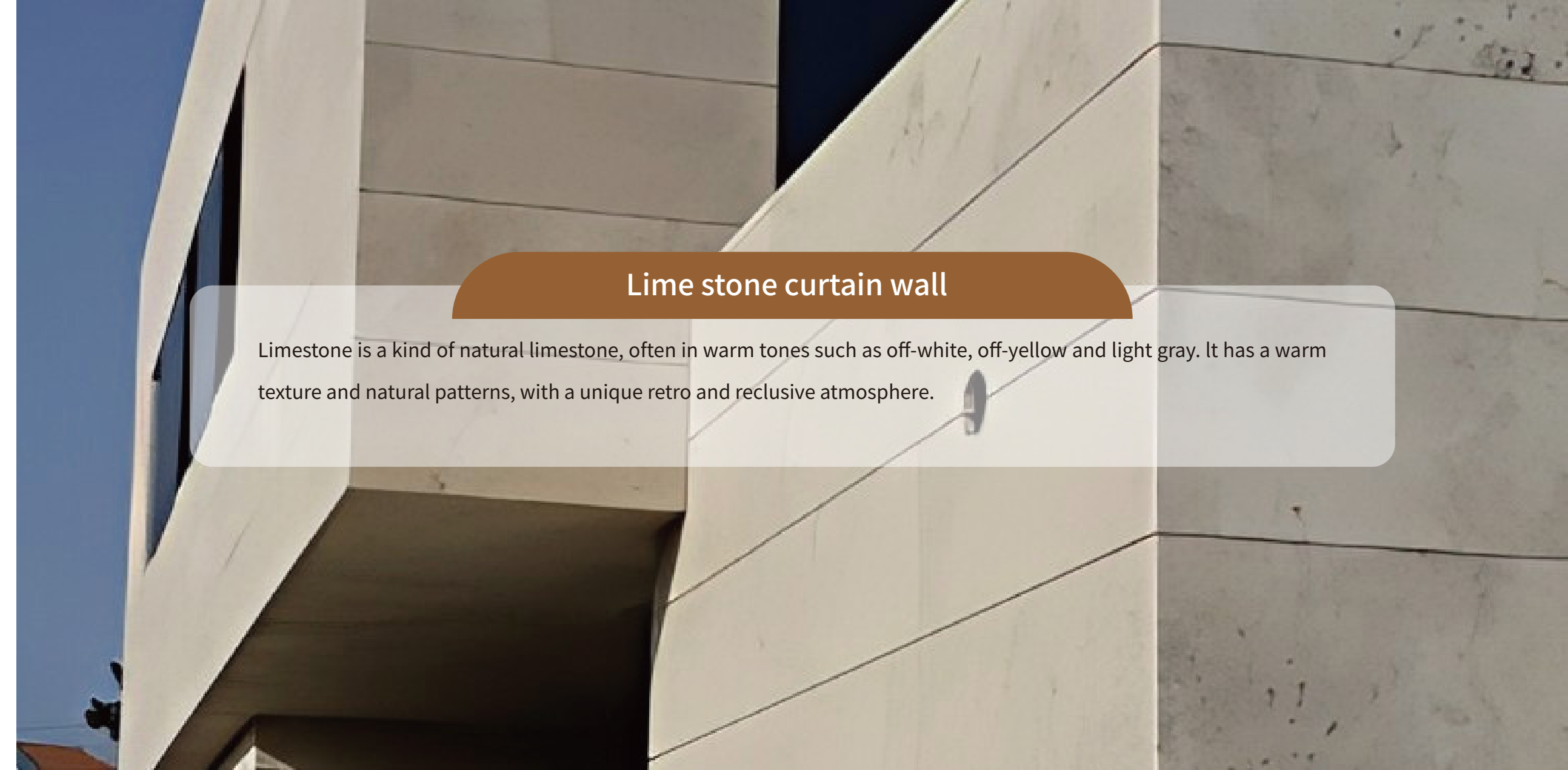
It can be made into polished surface, flamed surface, pebble surface, matte surface, antique surface, etc., supports flat plate, irregular, arc and line shapes.

## Granite Stone Curtain Wall Detail Drawing



Undercut Anchor Installation Diagram

Horizontal Section Detail of Undercut-Anchored Dry-Hanging Stone Curtain Wall

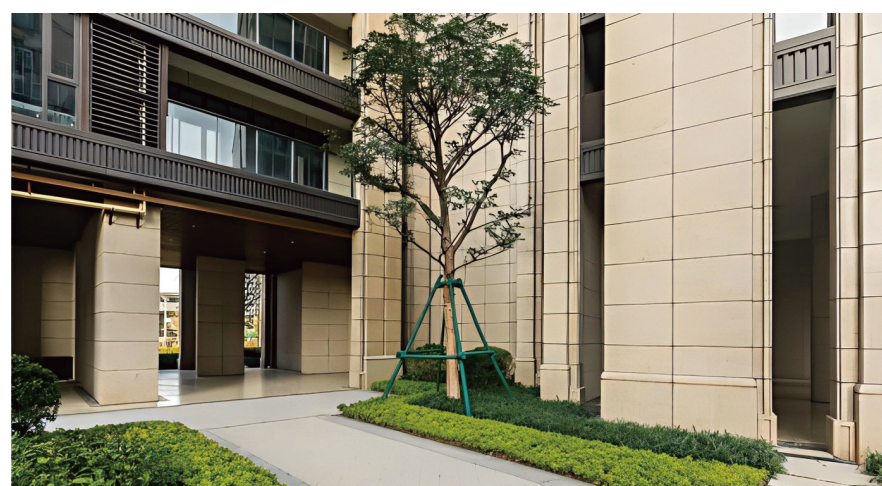
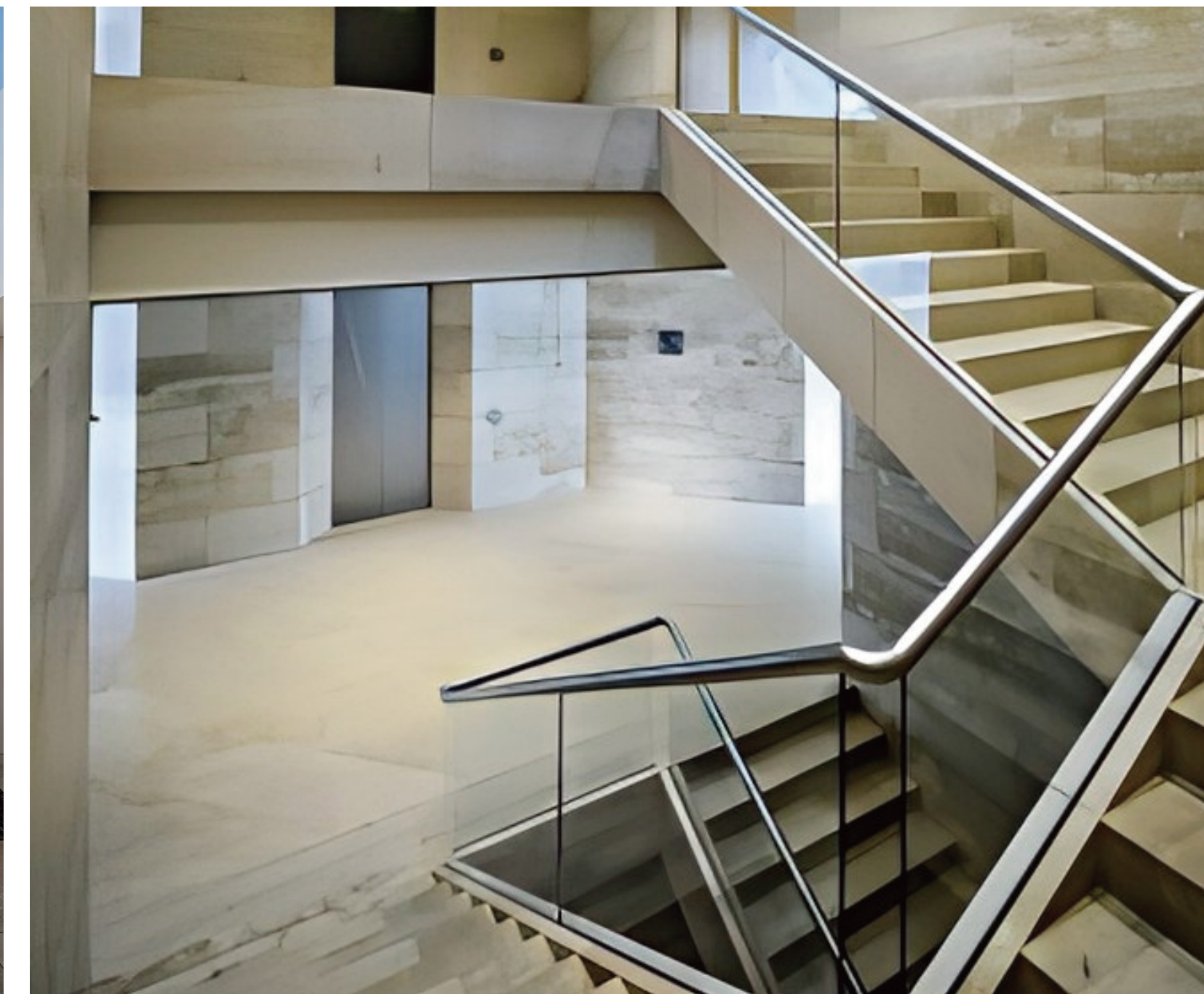


## Lime stone curtain wall

Limestone is a kind of natural limestone, often in warm tones such as off-white, off-yellow and light gray. It has a warm texture and natural patterns, with a unique retro and reclusive atmosphere.

## Technical Parameters of Stone Curtain Wall

Item	Value
Wind pressure resistance performance	$\geq 1.5 \sim 5.0$ kPa (depending on height/region)
Watertightness performance	$\geq 250 \sim 1000$ Pa (leakage prevention)
Airtightness performance	$\leq 0.1 \sim 0.5$ m <sup>3</sup> /(m·h) (energy saving)
Seismic performance	Seismic fortification intensity 6–8 degrees
Fire resistance rating	Class A non-combustible
Service life	Stone: 50+ years; Structure: 30+ years





### Product Introduction of Ceramic Panel Curtain Wall

Ceramic plate curtain wall is a natural clay as the main raw material, through high pressure extrusion molding, high temperature fire and become a new type of curtain wall decorative plate, with special keel system installed in the building facade, both decorative, durability and environmental protection, is the modern public buildings, high-end residential and commercial complex exterior wall retaining system in common use.



### Product Introduction of Stone-like Brick Curtain Wall

Imitation stone brick wall is to use high performance ceramic/porcelain base material, through high-definition digital inkjet, component fabrics, such as high temperature glaze process imitation natural stone (granite, marble, granite, etc, rock texture and texture of new curtain wall plate, using dry hanging system installed on the building facade, the stability of both high-end effect of stone material and ceramic tile performance.

